



For Earth, For Life
Kubota

Kubota also offers a full line-up of M-Series tractors. These tractors are the pinnacle of size, power, and performance.



M8540/M9540



M6040/M7040



M108S

M

**KUBOTA DIESEL TRACTOR
M100GX/M110GX
M126GX/M135GX**

The new Grand X Series deluxe mid-size tractors with more cab space offer a high level of comfort even under the most demanding jobs.



*This information is sourced from overseas and may not necessarily apply locally. It is essential that you confirm specifications and other information with your local Kubota dealer.



©2019 Kubota Corporation

Kubota Australia Pty Ltd
25-29 Permas Way, Truganina VIC, 3029 Australia
Freecall: 1800-334-653
Email: sales@kubota.com.au
Web Site: <http://www.kubota.com.au>

Kubota New Zealand Limited
Freecall: 0800-582-682
Email: sales@kubota.co.nz
Web Site: <http://www.kubota.co.nz>



**Kubota
Genuine Parts**
for maximum
performance,
durability and
safety

PREMIUM TRACTOR

The Grand X Just Keeps Getting Better!

STRONG BUT GENTLE

A combination of advanced Common Rail System (CRS), Exhaust Gas Recirculation (EGR) and Diesel Particulate Filter (DPF) Muffler makes our engines economical and clean with no sacrifice to power.

ADVANCED CONTROL

Take full advantage of the Grand X tractors' performance with the powerful 24F/24R IntelliShift transmission and Kubota Electronic Management System (K-EMS).

MANOEUVRABILITY

With features like the Bi-Speed Turn and electrohydraulic differential locks, the Grand X Series give you enhanced stability and tighter control even under tough situations.

Grand X

KUBOTA M SERIES TRACTOR
M100GX/M110GX
M126GX/M135GX



STRONG BUT GENTLE

CLEAN AND POWERFUL PERFORMANCE

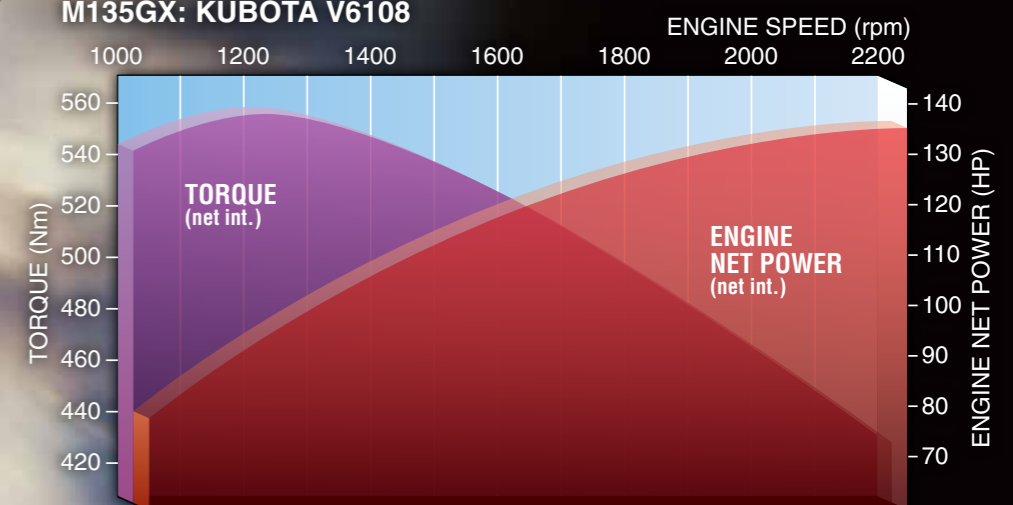
The Common Rail System (CRS) electronically controls the fuel injection timing and amount in stages rather than all at once for optimal combustion. The results are great efficiency, better fuel economy and less engine noise. Its combination with the Exhaust Gas Recirculation (EGR) and Diesel Particulate Filter (DPF) Muffler reduces harmful emissions to make the Grand X Series Interim Tier IV-compliant.



KUBOTA CLEAN DIESEL ENGINES

Kubota's compact 4-cylinder turbocharged Common Rail System (CRS) diesel engines with Exhaust Gas Recirculation (EGR) and Diesel Particulate Filter (DPF) Muffler combine tremendous power with outstanding fuel economy, and low noise and emissions. The V6108 engine for the M126GX and M135GX packs a whopping 125HP and 135HP respectively, while the V3800 for the M100GX and M110GX delivers an ample 100HP and 110HP respectively. And with maximum torque at low rpms, you can get the job done quicker and more efficiently. These engines also feature a powerful Waste Gate System turbocharger, for tremendous lugging and recovery power.

M135GX: KUBOTA V6108



Diesel Particulate Filter (DPF) Muffler



4-valve, Center-Direct Injection System

PANORAMIC LUXURY

GRAND X CAB

Discover freedom from within. The Grand X boasts one of the largest cabs in its class. We removed the center pillars and rounded the glass increasing both interior height and width to provide a more spacious feel. Wide-opening doors provide easier access while the unobstructed ceiling and fully flat floor guarantee more head- and legroom for a higher level of comfort even during long hours behind the wheel.



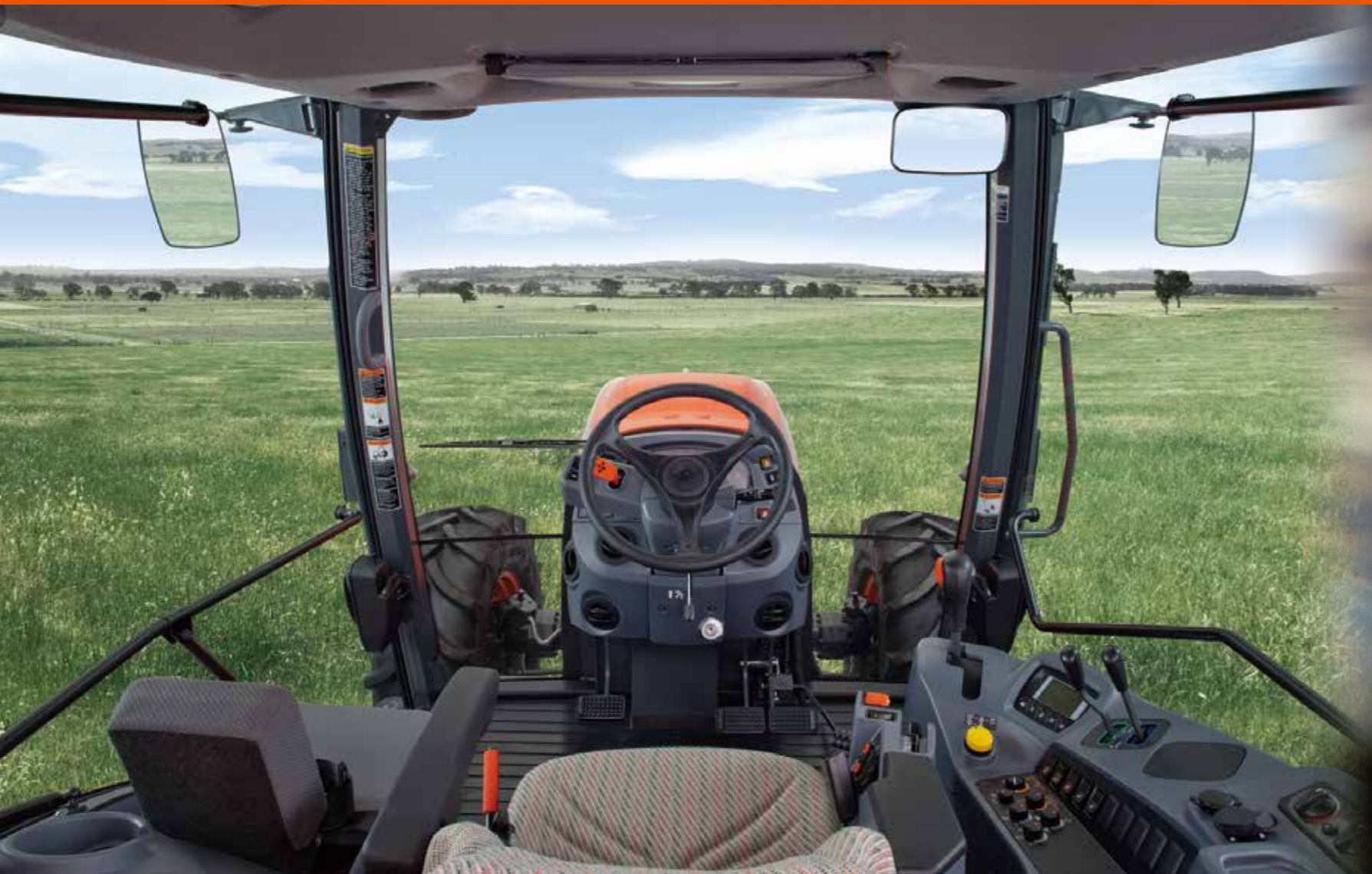
Previous cab



GRAND X CAB



PANORAMIC LUXURY



MAGNIFICENT FIELD OF VIEW

The Grand X provides a wide and virtually unobstructed field of view from every angle thanks to the roomy rounded cab with no center pillars. The cab has also been raised to provide a high viewpoint. A bottom-hinged windshield wiper enhances visibility by wiping the lower glass area, right up to the front tires. Plus, the standard-equipped under-hood corner-post exhaust pipe is specially placed to remain out of the way and give you a clear view.



Wide Rear View

To help you perform jobs efficiently and safely, the lower rear panel has been replaced with glass. You'll have a clear view of what's going on behind you.



Roof Panel

The Grand X's roof panel offers a clear view above making it especially handy when raising the front loader. The roof is also tilt adjustable for fresh-air ventilation.



Tilt and Telescopic Power Steering

Tilt and telescopic steering offers the ideal driving position while power steering makes steering easier even in rough terrain.



Deluxe Air-ride Seat

All Grand X tractors are equipped with a reclining and automatic height and weight control Air-ride seat that's especially designed to absorb shock and reduce operator fatigue.



Deluxe Heating and Air Conditioner

The rounded cab and strategically placed ventilation ducts optimize airflow for year-round comfort.



AM/FM Radio with CD Player

Audio controls are available on the right control console for easy access to controls.



Instructor's Seat (Optional)

Kubota also offers an optional instructor seat, which is useful when giving tutorials to new operators. Spaciousness is still maintained even with the seat unfolded.

INTUITIVE OPERATION

ERGONOMICALLY DESIGNED CAB

The Grand X's advanced cab is designed for great operating comfort. All displays, levers and controls – including those for audio and air conditioning – are strategically located on the right console or around the steering wheel for easy access and intuitive operation.



Hydraulic Shuttle Lever

Cleverly located behind the steering wheel, the one-touch hydraulic shuttle lever allows easy shifting between forward and reverse while keeping both hands on the wheel.



Operating Levers with Armrest

Operating levers and switches for controlling hydraulics and shifts offer an ergonomically-designed armrest to increase ease of use and reduce fatigue.



Swivel Seat

Equipped with an adjustable air-suspension system, contoured, and generously padded, you'll ride comfortably on your deluxe air-ride seat with swivel.



Parking Brake

ADVANCED CONTROL



INTELLI-SHIFT TRANSMISSION

(8-SPEED TRIPLE RANGE POWER SHIFT WITH AUTO-MODE)

Intelli-Shift Transmission

For maximum versatility, the 24F/24R Intelli-Shift transmission features an 8-speed powershift with a 3-speed, hi/mid/low range for 24 gears in forward and reverse. A convenient single lever operates both the powershift and range shift. Upshift and downshift are also at the touch of a button. A sophisticated microprocessor enables smooth, fatigue-free powershifting, and generous gear overlap means less changing of gears during operation.



Two upshift/downshift buttons
Found on the shift lever as well as on the right-side armrest, you can quickly upshift (+) or downshift (-) with just a touch of a button.

M135GX TRAVELLING SPEED (F32/R32 w/ Creep Speed, 520/70R38 rear tyres) @ rated engine rpm

Range	Gear	10	20	30	40
Creep (optional)	C1				
	C2				
	C3				
	C4				
	C5				
	C6				
	C7				
	C8				
Low range	1				
	2				
	3				
	4				
	5				
	6				
	7				
	8				
Mid range	1				
	2				
	3				
	4				
	5				
	6				
	7				
	8				
High range	1				
	2				
	3				
	4				
	5				
	6				
	7				
	8				

Control Console

User-friendly and ergonomically designed, the control console concentrates all operating controls and switches to your right-hand side, putting everything you need within easy reach. Everything is easy to see, easy to reach, and easy to use—making you more productive.

- | | | |
|-------------------------------------|--|---|
| 1. Shift lever (8-speed powershift) | 9. Rear work light switch | 15. Lift arm height limit adjustment dial |
| 2. Side digital LCD panel | 10. Rev-limiter control dial | 16. 3-point hitch limiter adjustment dial |
| 3. Auxiliary control lever | 11. Auto Mode sensitivity adjustment dial | 17. 3-point lift control lever |
| 4. PTO control knob | 12. 3-point hitch lowering speed adjustment dial | 18. Throttle lever |
| 5. Work Kruse switch | 13. 3-point link mode switch | 19. RPM dual memory switch |
| 6. Auto Mode switch | 14. Draft sensitivity adjustment dial | 20. Powershift switches |
| 7. Downhill control switch | | 21. One-touch 3-point lift / lower control switch |
| 8. Front work light switch | | |

Auto Mode

Auto Mode enables automatic shifting to maximize performance when your load or terrain changes. In Travel mode, the gears will be adjusted depending on road conditions and amount of acceleration; uphill and downhill. In Field mode, a downshift of 2 gears occurs once the three-point hitch has been raised. Field mode also keeps drops in PTO revolution to a minimum when the PTO switch is engaged.



Auto Mode switch



Auto Mode sensitivity adjustment dial



Auto Mode status display

Light soil

To maintain optimum working speed in the least demanding terrain, the transmission stays in your preset gear, for example 4th.



Heavy soil

For working in heavy soil, the transmission automatically downshifts to 3rd gear, then to 2nd, and 1st if required. When the terrain changes to light soil, the transmission automatically shifts back up to 4th.



Uphill

To power up an incline, the transmission automatically downshifts up to 3 speeds after sensing an increase in engine load by dropping the rpm.



Downhill

When the crest of a hill has been reached, the transmission will automatically upshift in order to regain optimum working speed.

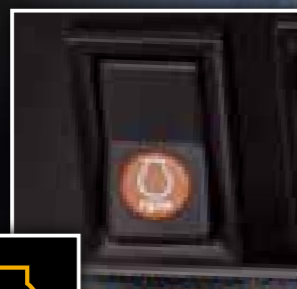


CONTROL TECHNOLOGY

KUBOTA ELECTRONIC MANAGEMENT SYSTEM (K-EMS)

Work KruiSe

The Grand X engines feature an electronic governor that electronically keeps the engine revolution constant, preventing drops in PTO speed and enabling stable operation. Used with the transmission's Auto Mode feature, Work KruiSe makes working with PTO-driven implements much more efficient.



Integrated Control System

An integrated controller area network (CAN) connects all microprocessors (engine, transmission, hydraulics, operational controls) monitoring tractor status and operator actions to provide optimal, integrated control of the tractor.

RPM Dual Memory

With the press of a button, you can now pre-set and save up to two frequently used engine RPM settings. So whether you have a favorite setting for PTO work, front loader work, or changing directions, your Kubota runs just the way you want, without having to adjust the throttle.



Example:
Setting A: PTO Work



Setting B: Front Loader Work



Rev-limiter Control Dial

With the simple turn of a dial, you can easily regulate engine revolution in 10 RPM increments.



Work KruiSe OFF:

When Work KruiSe is turned off, the engine operates like that of conventional tractors. When using the PTO, and there is a load increase on the engine, such as going uphill, throttle adjustments must be made to maintain PTO RPM, even if the engine RPM is set.

Engine RPM Set



Work KruiSe ON:

When engine RPM is set and Work KruiSe is switched on, there is no need for throttle adjustment. The computer automatically adjusts the amount of fuel injection to maintain PTO RPM levels.

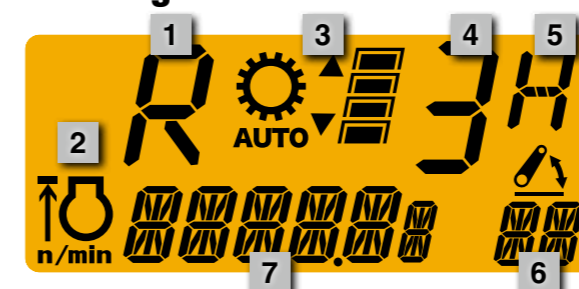
Engine RPM Set



Dash Panel

To keep you in better control of your tractor, we've upgraded the dash panel to include an LCD and more information than ever before. All of the important functional data is yours at a glance, to keep you up-to-date on the job.

Main Digital LCD Panel



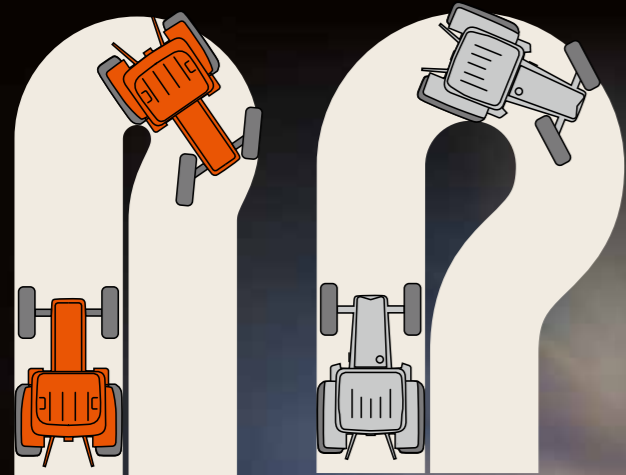
1. Shuttle position
2. Work KruiSe and Rev-limiter
3. Auto Mode
4. Main shift (Power shift)
5. Range shift
6. 3-point link level (%)
7. -Engine RPM
-Hour/Trip meter



Side Digital LCD Panel

The side digital LCD panel gives you precise control of your fieldwork, such as when spraying, by indicating travel speed and PTO RPM. It's conveniently located on your right, within easy view.

MANOEUVRABILITY



Bi-Speed Turn

Without Bi-Speed Turn

Bevel-gear Front Axle

Another Kubota exclusive, the bevel-gear front-wheel drive enables the tractors to achieve a tight turning radius, thanks to a generous 50° wheel-turning angle, enabling easy handling in varying conditions. The bevel gear design eliminates open U-joints and all components are hermetically sealed in oil.

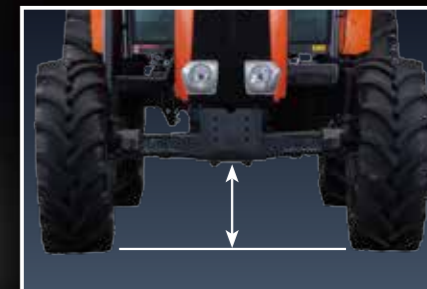
Bi-Speed Turn

When the front wheels exceed a turning angle of about 35°, Kubota's Bi-Speed Turn rotates the front wheels at a rate of speed nearly twice that of the rear wheels. The result is a smoother, tighter turn, allowing you to turn into rows on your first attempt, or to easily maneuver around livestock yards or buildings.



Electro-Hydraulic Differential Locks

Getting bogged down in mud will no longer slow you down with this feature. Simply engage the electro-hydraulic differential locks on both front and rear wheels to achieve positive traction—and you're up and out and back on the job.



High Crop Clearance

To offer one of the highest crop clearance in their class, the front axle propeller shaft passes through the engine oil pan to provide ample clearance.



Front Suspension System

The front suspension helps give you a comfortable ride and stable and precise operation. It works seamlessly with a shock absorber to smoothly negotiate rough terrain. (Available as a factory option for M135GX only)

With optional Front Suspension System



Without Front Suspension System



ULTRA PRODUCTIVE



Hydraulic Flow Valves and Auxiliary Control Valve

To ensure faster loader cycle times and instantaneous implement response, Grand X tractors have high-flow, 70.9 l/min (M100GX/M110GX) and 77.2 l/min (M126GX/M135GX) hydraulic pump. Two remote valves come standard—an SCD/Self-Canceling Detent and FD/Float-type valve. The maximum installation is 4 valves.



Individual Flow Control Valve

The two standard valves and the individual flow control valve allow the hydraulic flow to be adjusted independently for up to 4 auxiliary control valves so each valve together or the valves and 3-point hitch can be operated simultaneously. The oil flow rate is easily regulated by adjusting each flow control dial.

Hydraulic System

For smooth implement handling and extra speed of front loader and rear implement operations, Grand X tractors come equipped with gear-type hydraulic pumps. An external hydraulic cylinder improves lifting force and eases maintenance, while the adoption of an unload valve minimizes loss to hydraulic pressure to exert greater power during PTO operations when the 3-point hitch is not in use.



1 Live-Independent Hydraulic PTO

No matter what kind of work you need to do, you've got the power to operate a variety of rear-mounted implements with Kubota's 2-speed PTO (540 rpm and 1,000 rpm). To further increase productivity, our independent PTO can be engaged and disengaged by simply operating a control knob with automatic modulation for smooth engagement, and without stopping the tractor.

2 High Capacity 3P Hitch

Thanks to its large diameter outer cylinder, the 3-point hitch offers extra lifting capacity to easily handle jobs that require heavy implements.

3 Floating Lift Rods

The standard, both-side floating lift rods give these tractors a smoother ride and enhanced traction while using the 3-point hitch, especially on uneven terrain.

4 Quick Implement Hookup

The innovative design of the Category II 3-point hitch permits fast and easy implement attachment. The quick hook type lower link ends, telescopic stabilisers, crank-style right-lift rod, and the left fender-mounted remote hitch switch all work together to make hookup a snap.

5 Trailer Coupler (7-Pin)

An electric outlet is standard for use with a trailer or additional electrical implements.



One-piece Full-open Hood

The one-piece hood fully opens for easy access to the engine for maintenance. The hood is also slanted to increase visibility.

Wrap-around Front Grill

The smooth, flat, and easy-to-clean front grill design prevents hay, straw, and grass from getting caught inside the tractor. And, by allowing a high volume of air to flow in, the engine stays cooler.



Easy Cleaning and Maintenance

For fast cleaning, the sliding, louverless-type AC condenser and condenser net can be removed in a snap. The flat surface of the battery and tray also makes serviceability easier.



Air Filter

A large capacity air filter prevents harmful particulate matter from entering the cylinders to keep your tractor running for years on end.



Quad Front Lamps

Two main head lights at the bottom and two work lights on the top of front mask increase visibility especially in dark and inclement conditions.

FRONT LOADER

Roof Panel

The Grand X's sunroof-type roof panel offers a clear view above the cab to help facilitate the checking of the front loader position.



Euro Quick Coupler

The Euro quick coupler will let you quickly attach and detach a wide variety of attachments with a simple operation.



Hydraulic Self-leveling Valve

The hydraulic self-leveling mechanism gives the operator a clear view ahead because it doesn't require an upper loader link.

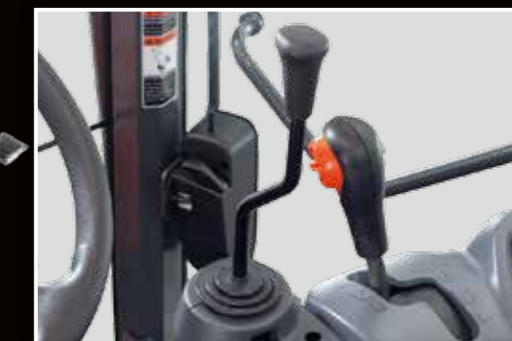
Hydraulic Shuttle Lever

Conveniently located behind the steering wheel, the hydraulic shuttle lever eliminates the need to depress a clutch when shifting between forward and reverse.



Front Loader Joystick

Located in the control console for smooth and effortless shifting and better forward visibility, our Front Loader Joystick greatly simplifies front loader operation so you can concentrate more on the work ahead. The Series Circuit makes possible simultaneous boom and bucket operation while the Regenerative Bucket Dump Circuit enables quick dumping for efficient operation with quick cycle times.



Lifting Power and Height

Two separate boom cylinder fulcrum points (Power position and Height position) give you the option to increase the loader's lifting power or height based on your needs. When using the pallet fork or bale spear, you may want to set the fulcrum to give you more height. For bucket work, a lower setting offers more power.



Quick Attach/Detach Loader

Attaching and detaching the front loader doesn't get easier, thanks to boom stands and two mounting pins. With easy-on and easy-off simplicity, and without tools, this feature is sure to contribute to your overall operating efficiency.

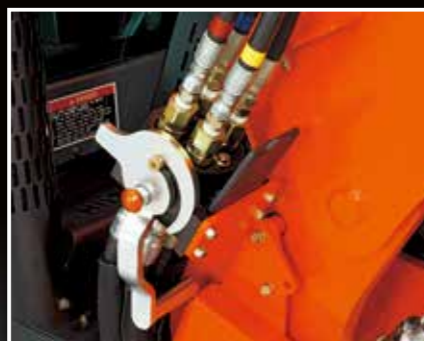
FRONT LOADER OPTIONS

With a host of convenient options, Kubota's powerful and versatile front loader lets you take on a wider variety of chores.



Kubota Shockless Ride (KSR)

The KSR helps to minimize fatigue by "smoothing out" the ride of the tractor. This feature is particularly useful when your tasks include a lot of tight turns or lifting and dumping of heavy loads. It makes handling round bales far less jarring.



Single-lever Hydraulic Quick Coupler

The quick coupler allows the operator to attach all four hoses at once. This makes attaching and detaching quick and easy, even when you're doing it often.



Third Function Valve

The optional 3rd function valve broadens the scope of the front loader operation by enabling the use of a grapple bucket and various other hydraulically controlled attachments. The 3rd function valve can be activated with a button located on the grip of the joystick.

FRONT LOADER SPECIFICATIONS

FRONT LOADER	LA1954E		LA2254E	
	M100GX/M110GX		M126GX/M135GX	
Tractor Model	Height	Power	Height	Power
Maximum lift height to pivot pin	mm	3700	3370	4099
Maximum lift height under level bucket	mm	3470	3160	3862
Clearance with bucket dumped	mm	2860	2490	2956
Reach at maximum lift height (45 deg.)	mm	489	864	761
Maximum dump angle	deg.	52	63	50
Reach with bucket on ground	mm	2230		2334
Bucket roll-back angle	deg.	40		40
Digging depth	mm	60	65	131
Overall height in carrying position	mm	1700		1880
Lift capacity to maximum height at pivot pin	kg	1895	1950	2137
Lift capacity to maximum height (800mm forward)	kg	1210	1350	1422
Lift capacity to 1.5M height at pivot pin	kg	2125	2380	2536
Lift capacity to 1.5M height (800mm forward)	kg	1575	1840	1967
Breakout force at pivot pin	N	24860	29250	29273
Breakout force (800mm forward)	N	17190	22200	21687
Bucket rollback force at maximum height	N	13720	16080	17627
Bucket rollback force at 1.5M lift height	N	25860		28622
Bucket rollback force at ground level	N	25810		28439
Raising time	sec.	3.8		4.5
Lowering time	sec.	3.3		3.9
Bucket dumping time	sec.	2.1		2.4
Bucket rollback time	sec.	2.5		3.0

SPECIFICATIONS

Model	M100GX	M110GX	M126GX	M135GX
Engine	V3800 – TI – CRS		V6108 – TI – CRS	
Type (Make: Kubota)	Common Rail System, direct injection, liquid-cooled		Common Rail System, direct injection, liquid-cooled	
No. of cylinders / Aspiration	4 / Turbocharger with intercooler		4 / Turbocharger with intercooler	
SAE net power	HP (kW)	100.0 (74.6)	109.5 (81.7)	125.0 (93.2)
PTO power	HP (kW)	86.0 (64.1)	96.0 (71.6)	108.0 (80.6)
Total displacement	cc	3769		6124
Bore x stroke	mm	100 x 120		118 x 140
Rated speed	rpm	2600		2200
Fuel tank capacity	ℓ	190		
Alternator / battery	115 Amp/12 V 100 Ah at 20 hours, 900 CCA		115 Amp/12 V 120 Ah at 5 hours, 1090 CCA	
Air cleaner	8" Dry, dual-element		10" Dry, dual-element	
Muffler	Under-bonnet, corner-post exhaust pipe			
Transmission	Intelli-Shift transmission			
No. of speeds (option)	24F / 24R (32F / 32R w/ creep)			
Main gear shift	8-speed powershift			
Range gear shift	3-speed mechanical shift with clutch button			
Shuttle shift	Microprocessor-controlled electro-hydraulic shuttle			
Bi-speed turn	Standard			
Creep speed (cassette type)	Optional (0.19 – 0.74 km/h)		Optional (0.20 – 0.74 km/h)	
Max. travelling speed (on Std. tyres)	km/h	38.0 @ maximum engine rpm		39.4 @ maximum engine rpm
Main clutch type / diameter	mm	Multiple wet disc, electro-hydraulically operated / 133mm x 7 discs		
Brake type	Hydraulically operated wet disc brakes, with automatic front axle engagement (4WD)*1			
Front wheel drive system	Bevel gear type, on-the-go electro-hydraulic engagement, w/ electro-hydraulic front differential lock			
PTO	Live-independent PTO, hydraulically operated wet clutch, w/ PTO brake			
PTO type	540 / 1000			
Hydraulics	Quick hitch lower link ends, telescopic stabilisers			
Pump output (hitch & remote)	ℓ/min.	70.9		77.2
Pump output (power steering)	ℓ/min.	60.4		54.8
3-point hitch (Category II)	Electronic draft control, lower link sensing, right & left fender-mounted hitch switch standard			
Control system	4285		5200	
Lift capacity at 610 mm behind lift point	kg	2 standard (3rd, 4th optional)		
Remote valves with individual flow control valve	2 standard (3rd, 4th optional)			
Steering	Hydrostatic power steering			
Cab	ISO-mounted flat deck, hanging pedals, tilt & telescopic steering wheel			
Operator area	Swivel, reclining, full adjustment (height, weight, fore & aft.), arm rests, retractable seat belt			
Seat (air ride)	2 headlights, 6 front working lights, 2 rear working lights, 2 tail lights, 4 safety flashers			
Lighting	Heater/air conditioner, sun visor, front wiper/washer, rear wiper/washer, beverage holder, tinted glass, 2 external mirrors, 1 internal mirror, interior light, shuttle lever with tilt & telescopic steering, CD/radio (AM/FM), roof panel			
Standard features				
Dimensions & weight				
Wheelbase	mm	2435		2690
Overall width (minimum tread)	mm	2100		2130
Overall length	mm	4245		4400
Overall height	mm	2810		2885
Crop clearance	mm	560		615
Tread width	mm	590		615
Front	mm	1430 / 1530		1550 / 1650
Rear	mm	1530 – 2040		1640 / 1770
Turning radius (w/o brake)	m	3.8*3		4.0*3
Weight (w/ standard tyre)	kg	3990		4705
Standard front tyre		340/85R24		420/70R24
Standard rear tyre		480/70R34		520/70R38
Other optional equipment	Front weights, rear, wheel weights, rear defogger, 3rd/4th remote valve w/ flow control, creep speed, additional front work lights (1 each on front combination light), additional rear work light (1 each on tail light), fuel tank guard kit, instructor seat,			

*1 The front axle is engaged automatically for braking purposes when both brake pedals are pressed together, regardless of whether 4WD or 2WD is activated.

*2 M135GX optional front suspension model only.

*3 W/ Bi-speed turn, 4WD ON.

The company reserves the right to change the above specifications without notice. This brochure is for descriptive purposes only. See dealer for complete warranty details. For your safety, Kubota strongly recommends the use of a Rollover Protective Structure (ROPS) and seat belt in almost all applications. For complete operational information, the operator's manual should be consulted.