



PLANTERS

BULK FILL | STACK-FOLD | PULL-TYPE | 3-POINT



A planter is one of the most important pieces of equipment in your operation, and much of your success depends on its accuracy and dependability. The planter must be able to precisely place seed in widely varying residue and soil types. In addition, it must be capable of accurately seeding hundreds of acres in a single day. Great Plains Yield-Pro® Planters are available in multiple row spacings and models with options and features to satisfy the diverse needs of today's cutting-edge farmer.

Great Plains Planters are ISO11783-compatible and interface with the OEM technology systems of most tractors. Options like the AccuShot™ fertilizer control system that maximizes fertilizer efficiency by delivering a metered shot of nutrients at precisely the right place, variable-rate seeding that adjusts seeding rates on-the-go, Swath Command™ that controls row status, and Row-Pro™ that manages opener down pressure are valuable – and all are available on Great Plains Planters.

The 25 Series row unit is designed to work harder and place seed better. One-half-inch (13mm) offset opener blades penetrate even the toughest no-till conditions. Eliminator side-depth arms keep mud away from the disc blades. Clear-Shot® seed tubes place seed in the bottom of the trench. T-handle depth assemblies ensure consistent seeding depth and a blade separator fertilizer tube delivers starter fertilizer below the seed.

We are proud to offer you these reputable products, and we want you to know our commitment to you will not stop after your purchase. Through our knowledgeable dealer network, helpful service personnel, educational resources, and informative website, we are committed to helping you find the right Great Plains Planter that will enable you to produce outstanding yields season after season.



TABLE OF CONTENTS

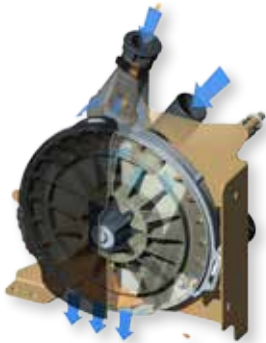
4	Planting Technology
5	Twin-Row
6-7	4-, 6-, & 8-Row
8-9	20' & 25' 3-Point Mounted
10-11	12- & 16-Row Bulk Fill
12-13	16-Row Liquid or Dry Fertilizer
14-15	30', 40', & 44' Bulk Fill
16-17	30' & 40' Stack-Fold
18-19	40' Stack-Fold Bulk Fill
20-21	60' Bulk Fill
22-23	Company Info

PLANTING TECHNOLOGY

Yield-Pro® | Air-Pro® | Twin-Row | Clear-Shot® | Keeton® Seed Firmer

Planter accuracy is vital for achieving even emergence. Without even emergence, plants that sprout days after the rest basically become weeds that rob nutrients and light from good plants, reducing the yield potential of both the late plant and the good neighboring plant. Great Plains Yield-Pro® Planters are designed to provide outstanding planting accuracy through a combination of innovative features.

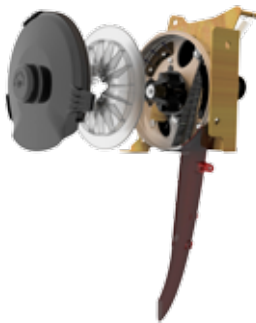
Air-Pro® Seed Meter



Seed Singulation

Air-Pro® Seed Meters eliminate skips and doubles, ensuring that seeds are consistently dropped one at a time with no deviation in spacing.

- Improved cell design aids in achieving a “dead drop.”
- “Positive Air” technology, instead of vacuum, reduces torque for greater accuracy and reduced wear.
- Large-diameter meters reduce meter speed to enhance filling and spacing.
- Static-eliminating brushes prevent the seed from “hanging” in the pocket.
- Pressureless seed drop ensures “dead drop.”



Clear-Shot® Seed Tube

Depth Control

Seeds planted at inconsistent depths result in uneven emergence. Side-depth gauging wheels are mounted on a “walking beam,” which reduces opener movement when one wheel runs over an obstruction.



Seed Tube Design

The Clear-Shot® Seed Tube provides every seed with an obstruction-free, smooth path to the bottom of the seed trench. Its high accuracy is maintained by a perfectly designed curvature for a 9 kph planting speed “dead drop.”

Seed Tube Accuracy

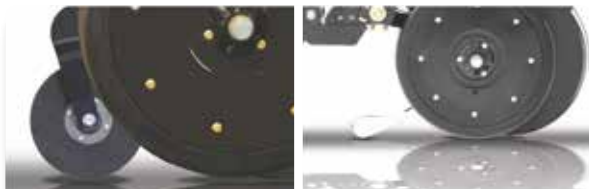
Lab Test Data

(69,140 seeds/hectare planted; 4-run average)

Clear-Shot®
Seed Tube
99.10%
of seed on target

Industry-Standard
Seed Tube
90.27%
of seed on target

Seed-To-Soil Contact



Seed-Lok® Wheel

Keeton® Seed Firmer

Seeds suspended in an air cavity and seeds in direct contact with the soil will not germinate at the same time and therefore affect yields. Great Plains Seed-Lok® Wheels or Keeton® Seed Firmers press the seed into moist soil, ensuring consistent germination.

Trench Closure



Good Trench Closing

Bad Trench Closing

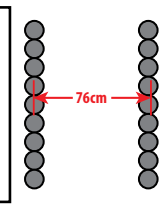
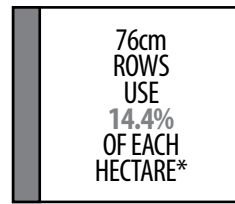
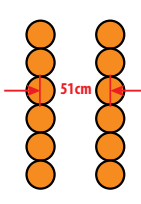
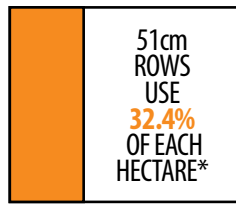
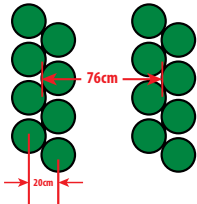
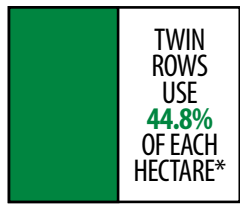
Great Plains Yield-Pro® Planters close the trench properly so that seeds won't dry out and cause uneven emergence.



TWIN-ROW

Twin Row Wins!

Studies indicate that roots will stop spreading when they encounter neighboring plant roots. Twin Row allows roots more room before running into neighboring roots. This and other advantages have been proven to increase yields by 796 kg/ha and increase tonnage and relative feed value in silage. Plus, harvest can be accomplished with a standard corn header.



*98,830 seeds/ha

Bigger Roots and Stalks



With more room to grow, vigorous root development gives the plant more access to moisture. The resulting increased stalk diameter makes plants stand better.

Sunlight and Moisture



Twin Rows

76cm Single Rows

Make more efficient use of moisture by having a larger root system and a canopy that covers the exposed soil quicker. The twin-row canopy not only slows evaporation, it makes better use of sunlight.

At V7 corn: (Approximately knee high)
76cm corn uses 30% of available sunlight
51cm corn uses 68% of available sunlight
Twin-Row corn uses 90% of available sunlight

Versatility



Twin-Row Soybeans

Twin-Row Milo

Twin-row spacing works for maize, beans, milo, wheat, and more. It also works in all areas and soil structures, and allows planting in higher populations.

4-, 6-, & 8-ROW

PLANTERS

MODELS: YP-425A | YP-425A3P | YP-625A | YP-625A3P | YP-825A | YP-825A3P

The 4-, 6-, and 8-Row Yield-Pro® Planters from Great Plains give smaller farmers access to the same yield-increasing technologies found in larger planters. Offered in three sizes, these compact planters are designed around the Air-Pro® metering system, delivering a new level of spacing and seed placement accuracy.

For added versatility, the 4-, 6-, and 8-Row Yield-Pro Planters can be configured with either standard single rows or the innovative twin-row design on 30", 36", 38", 40" or 70cm (76, 91, 97, 102cm) spacing. Plus, all models are available in either 3-point mounted or pull-type configurations.

Like their larger Yield-Pro counterparts, the 4-, 6-, and 8-row models each utilize 25 Series row units for greater accuracy, longer life, and easier maintenance than most competitive row units. Not only does the unit come with a broad selection of clear seed discs to handle a variety of different seeds, but customers also have a choice of closer wheels to match every operation and planting style. A hydraulic fan provides positive air to the Air-Pro® meters for exceptional accuracy. Four-inch (10cm) manifolds and proportional metering rings ensure the same pressure to each row unit without the worry of air leaks.



FEATURES & BENEFITS

- **25 Series Openers** - The 25 Series row unit utilizes ductile cast parallel arms for long-term row unit stability. 15" (38cm), 4mm blades turning on 205 triple-lip seal bearings ensure long life and accurate seed depth. Blades are offset 1/2" (13mm) to slice residue and form a perfect seed trench.
- **Air-Pro® Meter** - This simple, positive air pressure meter offers the highest level of singulation on the market today, and achieves uniform spacing by "dead-dropping" seed into the patented Clear-Shot® seed tube. Exhaust is discharged close to and directly towards the ground, not up into the atmosphere, earning the Bee-Friendly™ title. Gentle on seeds, it is more efficient than a vacuum meter and requires less maintenance.
- **Low Hydraulic Requirements** - A single 6" (15cm) fan is used for Air-Pro Meter pressurization, requiring only two hoses that hook to a remote outlet. No case drain or motor return required.
- **Seed Capacity** - 1.6 bu./row (56L/row) hoppers on twin-row models and 3.0 bu./row (106L/row) hoppers on single-row models.
- **Available Row Spacings** - Multiple row spacings are available to match a variety of needs, including 30", 36", 38", and 40" (76, 91, 97, 102cm) single- or twin-row configurations.



STANDARD EQUIPMENT

- Air-Pro® metering and fan system
- 25 Series openers
- 205 triple-lip seal bearings
- Clear-Shot® seed tubes
- Ground-engaging positive drive system
- 3 bu. (106L) hoppers on single-row models
- 1.6 bu. (56L) hoppers on twin-row models
- LED safety lighting

OPTIONAL EQUIPMENT

- Liquid fertilizer or dry fertilizer
- Row cleaners
- PTO hydraulic pump
- Clevis or single-strap hitch
- Markers
- Gauge wheel scrapers
- Wide range of seed discs

4-, 6-, & 8-Row	YP-425A	YP-425A3P	YP-625A	YP-625A3P	YP-825A	YP-825A3P
Row Spacing	30", 36", 38", 40", TR30", TR36", TR38", TR40" (70, 76, 91, 97, 102, TR76, TR91, TR97, TR102cm)					
H.P. Requirements	75-125		95-160		115-200	
Planting Width	10' 0.5", 15' 0.5" (3m, 4.6m)		15' 0.5", 20' 0.5" (4.6m, 6.1m)		20' 0.5", 25' 10.5" (6.1m, 7.6m)	
Transport Height	6' 6" (2m)					
Weight lbs*	2,400 - 3,200 (1,089 - 1,451kg)		3,600 - 4,500 (1,633 - 2,041kg)		4,800 - 6,500 (2,177 - 2,948kg)	
Seed Capacity	1.6 bu./row (56L) (twin-row) ; 3 bu./row (106L) (single-row configurations)					
Fertilizer Capacity: Dry Liquid**	18 cu/ft. (510 L) 200 gal. (757L)		27 cu/ft. (765 L) 300 gal. (1,136L)		36 cu/ft. (1,019 L) 400 gal. (1,514L)	

Specifications are subject to change without prior notification. Images may or may not depict current production models.

*Approximate maximum base weight
**Fertilizer not available on 3-pt models.

20' & 25' 3-POINT MOUNTED

MODELS: 2025A | 2525A

PLANTERS

With both the box capacity of a drill and the precision seed singulation and placement of a planter, the 2025A and 2525A (6.1m and 7.6m) Planters from Great Plains offer the best of both worlds when it comes to planting flat or on beds.

Air-Pro® metering, coupled with Clear-Shot® seed tubes, will plant a wide variety of seeds, including corn, soybeans, milo, cotton, and rice. Easily adjust the heavy-duty straddle axle gauge wheels from planting flat to running on beds.



FEATURES & BENEFITS

- **25 Series Row Unit** - The 25 Series row unit utilizes ductile cast parallel arms for long-term row unit stability. 15" (38cm), 4mm blades turning on 205 triple-lip seal bearings ensure long life and accurate seed depth. Blades are offset ½" (13mm) to slice residue and form a perfect seed trench.
- **Air-Pro® Meter** - This simple, positive air pressure meter offers the highest level of singulation on the market today, and achieves uniform spacing by "dead-dropping" seed into the patented Clear-Shot® seed tube.
- **High-Capacity Seed Box** - The 2.4 bu./ft. (277L/m) seed box combines the large capacity of a grain drill with the accuracy of the 25 Series planter row unit. A V-bottom design ensures that all the seed in the seed box will empty completely.
- **Available Row Spacings** - To match diverse needs, models are offered in both single- or twin-row configurations.
- **Tuned Manifold** - Each Yield-Pro® air manifold contains orifices to deliver the same volume of air to every row. This detail helps ensure consistent seed rates throughout.



STANDARD EQUIPMENT

- Air-Pro® metering system
- Protected gauge wheel drive chain
- LED safety lighting
- Lift-assist cylinder on box lids
- Seed level indicator
- Wide walkboards
- Acremeter
- Seed tube sensors
- Choice of closer wheels

OPTIONAL EQUIPMENT

- Unit-mounted attachments
- Markers
- DICKEY-john® Seed Manager SE
- Weight bracket kit
- Gauge wheel scrapers
- Seed-Lok® seed firmers
- Keeton® seed firmers



20' & 25' 3-Pt Mounted (6.1m & 7.6m)	2025A	2525A
Row Spacing	9.5", TR30", TR36", TR36"-15, TR38" (24, TR76, TR76-15, TR97cm)	9.5", TR30", TR36", TR38", TR38"-15, TR40" (24, TR76, TR91, TR97, TR38-15, TR102cm)
H.P. Requirements	185 - 210	235 - 300
Planting Width	16' 3" - 19' (5 - 5.8m)	24' (7.3m)
Transport Width	21' (6.4m)	25' 2" (7.7m)
Transport Height	8' 7" (2.6m)	9' 5" (2.9m)
Weight lbs*	4,700 - 6,700 (2,132 - 3,039kg)	7,400 - 8,900 (3,357 - 4,037kg)
Seed Capacity	48 bu. (1,691L)	54 bu. (1,903L)

Specifications are subject to change without prior notification. Images may or may not depict current production models.

*Approximate maximum base weight

12- & 16-ROW BULK FILL

PLANTERS

MODELS: YP-1225A | YP-1625A

Compare refill times, row-spacing options, and bulk-fill capacities, and it is clear that these 12- and 16-Row Bulk Fill Yield-Pro® Planters from Great Plains are designed to make more money and save more time than any comparable planter on the market.

Simply load the onboard 82- or 150-bushel (2,890 or 5,286L) poly hopper and start planting. A 400-gallon (1,514L) starter fertilizer system, featuring a ground-driven CDS-John Blue piston pump or optional hydraulic drive pump for variable rate, may be added to planters equipped with an 82-bushel (2,890L) hopper.

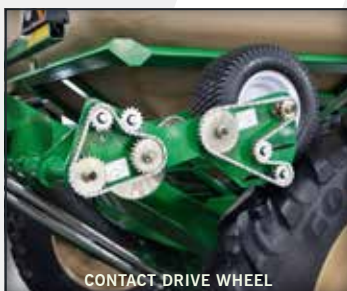
The patented air manifold delivers air to the row unit meters for meter pressure on demand without using any moving parts, increasing reliability while decreasing maintenance costs and seed damage.

These planters are available in a variety of row spacings in both single- and twin-row configurations. Options include a variable-rate hydraulic drive, Keeton® seed firmers, Seed-Lok®, unit-mounted coulters, and row cleaners.



FEATURES & BENEFITS

- **Central Fill** - The central fill system can be fitted with an 82 bu. or 150 bu. (2,890 or 5,296L) hopper for maximum field efficiency and operator safety.
- **25 Series Row Unit** - The 25 Series row unit utilizes ductile cast parallel arms for long-term row unit stability. 15" (38cm), 4mm blades turning on 205 triple-lip seal bearings ensure long life and accurate seed depth. Blades are offset 1/2" (13mm) to slice residue and form a perfect seed trench.
- **Air-Pro® Meter** - This simple, positive air pressure meter offers the highest level of singulation on the market today, and achieves uniform spacing by "dead-dropping" seed into the patented Clear-Shot® seed tube. Exhaust is discharged close to and directly towards the ground, not up into the atmosphere, earning the Bee-Friendly™ title. Gentle on seeds, it is more efficient than a vacuum meter and requires less maintenance.
- **Multiple Row Spacings Available** - To match diverse needs, 15", 20", 30", 70cm, and 36" (YP-1625A only) (38, 51, 76 and 91cm) single-row configurations and 30" and 36" (76 and 91cm) twin-row configurations are offered.
- **High Flotation** - 14.9R46 R1 tires on the mainframe, coupled with the 19.0/45-17 wing tires, provide unmatched flotation for planters of this size.



STANDARD EQUIPMENT

- Air-Pro® metering system
- Telescoping tongue
- 25 Series openers
- 4mm blades
- 205 triple-lip seal bearings
- Center flex
- Contact drive
- Heavy-duty row unit down-pressure springs
- Walkboard
- 2-section point row control
- LED safety lighting

OPTIONAL EQUIPMENT

- Swath Command™
- Row-Pro™
- AccuShot™
- Row cleaners
- PTO drive pump
- Tire upgrade
- Hydraulic drive
- Liquid fertilizer system with tanks
- 18.4 - 42 tires
- Low-profile flat-fold markers

12- & 16-Row Bulk Fill	YP-1225A	YP-1625A
Row Spacing	15", 20", 30", TR30", TR36" (38, 51, 76, TR76, TR91cm)	15", 20", 30", 36", 70cm, TR30", TR36" (38, 51, 76, TR76, TR91cm)
H.P. Requirements	140 - 205	165 - 275
Planting Width	30' (9.1m)	40' (12.2m)
Transport Width	13' 6" (4.1m)	
Transport Height	12' 2" (3.7m)	
Weight lbs*	15,540 - 18,160 (7,049 - 8,237kg)	15,800 - 20,160 (7,167 - 9,144kg)
Seed Capacity	Optional 82 or 150 bu. hoppers (2,890 or 5,286L)	

Specifications are subject to change without prior notification.
Images may or may not depict current production models.

*Approximate maximum weights with attachments

16-ROW LIQUID OR DRY FERTILIZER

PLANTERS

MODELS: 1625AHL | 1625AHD

Simple to operate, the 1625AHL and 1625AHD Yield-Pro® Planters from Great Plains are designed for operators who need high-capacity onboard fertilizer, either liquid or dry.

Their unique design incorporates a rugged frame with field-proven Great Plains 25 Series openers to provide the planting accuracy today's producers need to achieve uni-

form emergence and higher yields. Additionally, all models feature the patented Great Plains Air-Pro® metering system.

Multiple row-spacing configurations allow producers to fine tune this planter to complement their operations, while maintaining the accuracy that has come to be expected from Great Plains.



www.GreatPlainsInt.com



FEATURES & BENEFITS

- **25 Series Row Unit** - The 25 Series row unit utilizes ductile cast parallel arms for long-term row unit stability. 15" (38cm), 4mm blades turning on 205 triple-lip seal bearings ensure long life and accurate seed depth. Blades are offset 1/2" (13mm) to slice residue and form a perfect seed trench.
- **Air-Pro® Meter** - This simple, positive air pressure meter offers the highest level of singulation on the market today, and achieves uniform spacing by "dead-dropping" seed into the patented Clear-Shot® seed tube. Exhaust is discharged close to and directly towards the ground, not up into the atmosphere, earning the Bee-Friendly™ title. Gentle on seeds, it is more efficient than a vacuum meter and requires less maintenance.
- **True Center Flexibility** - Planter flexes in the center to better follow contours and undulations in the field. This feature also matches 8- and 16-row corn heads.
- **Multiple Row Spacings Available** - To match diverse needs, models are offered in single- or twin-row configurations including 70 and 75cm single and twin-row.



STANDARD EQUIPMENT

- 100 bu. (3,524L) dry fertilizer capacity (AHD model)
- 750 gal. (2,839L) liquid fertilizer capacity (AHL model)
- 3 bu. (106L) hoppers on single-row models
- 1.6 bu. (56L) hoppers on twin-row models
- DICKEY-john® monitor and blockage sensors
- Ground-drive fertilizer metering
- 25 Series openers
- Air-Pro® metering system
- 205 triple-lip seal bearings
- Clear-Shot® seed tubes
- LED safety lighting

OPTIONAL EQUIPMENT

- Fertilizer coulters
- Row cleaners
- Paddle wheel ground drive
- PTO hydraulic pump
- Gauge wheel scrapers
- Markers
- AccuShot™ (AHL model only)

16-Row Liquid or Dry Fertilizer	1625AHL	1625AHD
Row Spacing	15", 20", 30", 36", TR30", TR36" 70, 75, TR70, TR75cm (38, 51, 76, 91, TR76, TR91cm)	20", 30", 36", TR30", TR36" 70, 75, TR70, TR75cm (51, 76, 91, TR76, TR91cm)
H.P. Requirements	165 - 340	
Planting Width	40' 4" - 47' 7" (12.3 - 14.5m)	
Transport Width	13' 6" (4.1m)	
Transport Height	12' 6" (3.8m)	
Weight lbs* (Weight kg*)	18,800 - 22,900 (8,528 - 10,387kg)	18,400 - 22,400 (8,346 - 10,160kg)
Seed Capacity	1.6 bu./row (56L) (twin row); 3 bu./row (106L) (single-row configurations)	
Fertilizer Capacity: Liquid Dry	750 gal. (2,839L)	100 bu. (3,524L)

Specifications are subject to change without prior notification.
Images may or may not depict current production models.

*Approximate maximum base weight

30', 40', & 44' BULK FILL

MODELS: YP-3010HDP | YP-3025A | YP-4010HDP | YP-4025A | YP-4425A

PLANTERS

With a choice of two openers and eight row spacings, the YP-30 and YP-40 Series Yield-Pro® Planters from Great Plains can be almost anything the customer needs them to be! Despite their size, these 30' and 40' (9.1 and 12.2m) units have the dependability and flexibility to handle any terrain.

All YP-30 and YP-40 Planters are equipped with a choice of openers: 10HDP Series or 25 Series. Versatile 10HDP Series openers feature rear depth-gauging press wheels in a choice of three styles. Ten inches (25cm) of vertical travel provided by the parallel linkage, combined with 11" (28cm) of stagger between rows, make the 10HDP the perfect answer for rough fields and heavy residue. With a choice of two row spacings, 10HDP Series units are ideal for planting 7½" (19cm) wheat or 10" (25cm) soybeans.

The Great Plains 25 Series opener is setting a new standard for both spacing and depth control. These units are available in a variety of row spacings, including both single and twin row. Designed for sugar beet growers, Great Plains also offers a 44-foot (13.4m), 25 Series model that plants in 22" (56cm) rows.

Row units on these planters feature 15" (38cm) 4mm disc blades that are offset 1/2" (13mm) for unmatched penetration. Clear-Shot® seed tubes with either Air-Pro® seed meters, Population Max™ finger pickups, or Singulator-Plus™ meters provide excellent seed placement for uniform emergence.

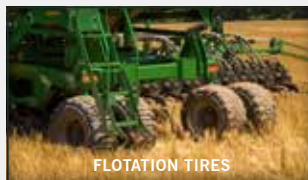
Additionally, YP-30 and YP-40 Series Planters include an onboard 82- or 150-bushel (2,890 or 5,286L) poly hopper. Hydraulic weight transfer is optional on all models to evenly distribute the weight across the entire toolbar.



FEATURES & BENEFITS

- **Central-Fill** - The central fill system can be fitted with an 82 bu. or 150 bu. (2,890 or 5,286L) hopper for maximum field efficiency and operator safety. A 400-gallon (1,514L) fertilizer system is also available.
- **25 Series Row Unit*** - The 25 Series row unit makes narrow, singulated rows possible. Its parallel linkage design and side-depth wheels keep the row unit in the optimal planting position to provide precise seed placement to maximize yield potential. The opener's body and ductile cast parallel arms are narrower, yet stronger, than conventional 30" (76cm) openers. The 15" (38cm) , 4mm opener blades are offset by 1/2" (13mm) for superior penetration. Cast blade separators and Clear-Shot® seed tubes provide excellent delivery of seed to the seed trench.
- **10HDP Series Row Unit*** - Versatility describes this heavy-duty row unit. The 10HD Series opener uses 15" (38cm) 4mm blades with 205 triple-lip seal bearings, cast blade separators, and Clear-Shot® seed tubes. Blades are offset by 1/2" (13mm) to slice residue and form a perfect seed trench. Heavy-duty down-pressure springs are mounted on the parallel arm linkage. A choice of closing wheels is available to work well in a wide variety of soil types and conditions.
- **Air-Pro® Meter** - This simple, positive air pressure meter offers the highest level of singulation available today. It achieves uniform spacing by "dead-dropping" seed into the patented Clear-Shot® seed tube. Exhaust is discharged close to and directly towards the ground, not up into the atmosphere, earning the Bee-Friendly™ title. Gentle on seeds, it is more efficient than a vacuum meter and requires less maintenance.
- **Multiple Row Spacings Available** - To match diverse needs, models are offered in single- or twin-row configurations. The YP-4425A is specially designed to meet the high demands of today's sugar beet growers with 22" (56cm) row spacing.
- **High Flotation** - 10 large, high-flotation tires reduce pressure on the ground, down to as little as 9-11 psi (62-76 kPa).*

*depending on model



STANDARD EQUIPMENT

- Air-Pro® metering system
- Variable-rate hydraulic drive
- Floating hitch
- High-flotation tires
- 3-section point row control
- 25 Series openers
- 10HDP Series openers (HDP models)
- 15" (38cm) 4mm blades
- 205 triple-lip seal bearings
- ClearShot® seed tubes
- On-demand air delivery system
- LED safety lighting

OPTIONAL EQUIPMENT

- Swath Command™
- Row-Pro™
- AccuShot™
- Row cleaners
- PTO drive pump
- Hydraulic weight transfer
- Ground-driven 400 gal. (1,514L) fertilizer system
- Flat-fold markers

30', 40', & 44' Bulk Fill	YP-3010HDP	YP-3025A	YP-4010HDP	YP-4025A	YP-4425A
Row Spacing	7.5", 10" (19, 25cm)	70, TR70, TR75cm 10", 15", 20", 30", TR30", TR36" (25, 38, 51, 76, TR76, TR91cm)	7.5", 10" (19, 25cm)	70, TR70cm 10", 15", 20", 30", TR30" (25, 38, 51, 76, TR76cm)	22" (56cm)
H.P. Requirements	280 - 385	120 - 325	300 - 360	180 - 480	240 - 280
Planting Width	29' 11" - 30' 1" (9.1 - 9.2m)	29' 7" (9m)	39' 7" (12.1m)	39' 7" (12.1m)	44' (13.4m)
Transport Width	14' 10" (4.5m)				
Transport Height	12' 4" (3.8m)				
Weight lbs* (Weight kg*)	24,100 - 25,300 (10,932 - 11,476kg)	21,900 - 27,400 (9,934 - 12,428kg)	27,500 - 32,600 (12,474 - 14,787kg)	23,000 - 29,800 (10,433 - 13,517kg)	28,800 (13,063kg)
Seed Capacity	82 or 150 bu. (2,890 or 5,286L) hoppers				

Specifications are subject to change without prior notification. Images may or may not depict current production models.

*Approximate maximum weights with attachments

30' & 40' STACK-FOLD

PLANTERS

MODELS: 3P3025AH | 3P4025AH

The 3P3025AH and 3P4025AH Stack-Fold Planters from Great Plains bring a new level of accuracy and simplicity to the mounted stack-fold planter line. Individual hoppers on each row, positive 3-section ground drive, and the proven accuracy of both the Great Plains 25 Series opener and the Air-Pro® metering system make these simple, highly-productive machines.

Providing all the ruggedness and accuracy of a central-fill planter, the 3P3025AH and 3P4025AH are the perfect option for cost-conscious operators who want a planter with individual hoppers. With the choice of single- or twin-row technology, these planters precisely meter the seed, place the seed at the desired depth, firm it in the seed trench, and close the trench to support maximum yields.



www.GreatPlainsInt.com



FEATURES & BENEFITS

- **25 Series Row Unit** - The 25 Series row unit utilizes ductile cast parallel arms for long-term row unit stability. 15" (38cm), 4mm blades turning on 205 triple-lip seal bearings ensure long life and accurate seed depth. Blades are offset 1/2" (13mm) to slice residue and form a perfect seed trench.
- **Air-Pro® Meter** - This simple, positive air pressure meter offers the highest level of singulation on the market today, and achieves uniform spacing by "dead-dropping" seed into the patented Clear-Shot® seed tube.
- **3-Section Flexibility** - Flexes in three sections for unmatched terrain-following capabilities.
- **Multiple Row Spacings Available** - To match diverse needs, models are offered in single- or twin-row configurations. Twin-row and 15" (38cm) units have 1.6 bu. (56L) hoppers, and 20" to 40" (51 to 102cm) single-row units have 3.0 bu. (106L) hoppers.



STANDARD EQUIPMENT

- DICKEY-john® PM 400 Monitor
- Air-Pro® metering system
- 3-section ground drive
- 25 Series openers
- 4mm blades
- 205 triple-lip seal bearings
- Heavy-duty down-pressure springs (up to 500 lbs. (227kg)/row)
- Cast blade separator with fertilizer tube
- Clear-Shot® seed tubes
- 1.6 bu. (56L) hoppers on twin-row models
- 3 bu. (106L) hoppers on single-row models
- LED safety lighting

OPTIONAL EQUIPMENT

- Wing lock
- Wing flex
- Hydraulic wing weight transfer (3P4025AH)
- Air design inside disc scrapers
- Unit-mounted coulters w/ fluted or turbo blades
- Coulters-mounted row cleaners (3P4025AH)
- Unit-mounted stand-alone row cleaners (3P3025AH)
- Hydraulic drive controlled by DICKEY-john® IntelliAg™

30' & 40' Stack-Fold (9.1 & 12.2m)	3P3025AH	3P4025AH
Row Spacing	15", 20", 22", 30", 36", 38", 40", TR30", TR36", TR38", TR40" (38, 51, 56, 76, 91, 97, 102, TR76, TR91, TR97, TR102cm)	30", 36", 38", 40", TR30", TR36", TR38", TR40" (76, 91, 97, 102, TR76, TR91, TR97, TR102cm)
H.P. Requirements	150 - 240	220 - 330
Planting Width	24' - 30' (7.3 - 9.1m)	36' - 40' (11 - 12.2m)
Transport Width	12' 1" - 16' 4" (3.7 - 5m)	24' 3" - 25' 1" (7.4 - 7.7m)
Transport Height	12' 9" (3.89m)	12' 8" (3.86m)
Weight lbs*	9,299 - 14,595 (4,218 - 6,620kg)	12,500 - 18,400 (5,670 - 8,346kg)
Seed Capacity	1.6 bu./row (56L) (twin row); 3 bu./row (106L) (single-row configurations)	

Specifications are subject to change without prior notification.
Images may or may not depict current production models.

*Approximate maximum working weights

40' STACK-FOLD BULK FILL

MODELS: 3PYPA

PLANTERS

The 40' (12.2m) Stack-Fold Planter from Great Plains is truly in a class by itself, with the versatility of multiple row-spacing configurations and the productivity of a bulk seed hopper. Efficiency starts with a choice of single row spacings from 15" to 40" (38 to 102cm), as well as twin-row configurations of 30", 36", 38", and 40" (76, 91, 97, 102cm) – ensuring a planter to fit every customer's needs.

Great Plains Stack-Fold Planters are equipped with an 82-bushel (2,890L) poly hopper. The Air-Pro® metering system offers the highest level of singulation on the market today.

Finally, the unit was designed to stack-fold to a transport width of 25' (7.6m), with extra clearance down low for bridges, signs, and gate openings. The optional row markers also fold down to reduce the transport height, further increasing safety during transport.



FEATURES & BENEFITS

- **25 Series Row Unit** - The 25 Series row unit utilizes ductile cast parallel arms for long-term row unit stability. 15" (38cm), 4mm blades turning on 205 triple-lip seal bearings ensure long life and accurate seed depth. Blades are offset 1/2" (13mm) to slice residue and form a perfect seed trench.
- **Air-Pro® Meter** - This simple, positive air pressure meter offers the highest level of singulation on the market today, and achieves uniform spacing by "dead-dropping" seed into the patented Clear-Shot® seed tube. Exhaust is discharged close to and directly towards the ground, not up into the atmosphere, earning the Bee-Friendly™ title. Gentle on seeds, it is more efficient than a vacuum meter and requires less maintenance.
- **Active Hydraulic Steering** - An active hydraulic steering system controls rear casters to allow for backing without sacrificing flotation and maneuverability.
- **Multiple Row Spacings Available** - Multiple row spacings are available to match a variety of needs, including 15" (38cm) single-row, or 30", 36", 38", 40" (76, 91, 97, 102cm) single- or twin-row configurations.
- **Central-Fill Hopper** - The 3PYPA features an 82 bu. (2,890L) hopper to maximize field efficiency while reducing operator exposure to seed treatment.

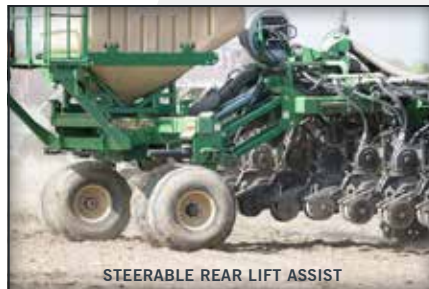
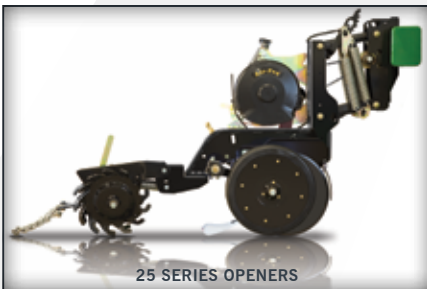


STANDARD EQUIPMENT

- Air delivery system
- Air-Pro® metering system
- Ground drive
- 25 Series openers
- 4mm blades
- 205 triple-lip seal bearings
- Heavy-duty row unit down-pressure springs
- Walkboard
- Hydraulic steering
- 3-section point row control
- LED safety lighting

OPTIONAL EQUIPMENT

- Swath Command™
- Row-Pro™
- Row cleaners
- PTO drive pump
- Markers
- Dual rear caster wheels



40' (12.2m) Stack-Fold Bulk Fill	3PYPA
Row Spacing	15", 30", 36", 38", 40", TR30", TR36", TR38", TR40" (38, 76, 91, 97, 102, TR76, TR91, TR97, TR102cm)
H.P. Requirements	220 - 330
Planting Width	40' (12.2m)
Transport Width	24' 6" - 25' 2" (7.5 - 7.7m)
Transport Height	12' 8" (3.9m)
Weight lbs*	14,500 - 18,700 (6,577 - 8,482kg)
Seed Capacity	82 bu. (2,890L) hopper

Specifications are subject to change without prior notification. Images may or may not depict current production models.

*Approximate maximum base weight

60' BULK FILL

PLANTERS

MODELS: YP-2425A

Great Plains proudly introduced the industry's first 60' (18.3m) planter with the ability to plant 15" (38cm) and twin-row 30" (76cm). 20" and 30" (51 and 76cm) spacing are also available. The YP-2425A features a floating-hitch design that provides the flexibility to meet challenging terrain. Yet, the 60' (18.3m) Yield-Pro® model easily folds to a transport width of only 15' 3" (4.7m). The telescoping tongue retracts in field position for short headlands and outstanding maneuverability.

The Great Plains YP-2425A Planter is equipped with two 82-bushel (2,890L) poly hoppers. With its 164 bu. (5,779L) capacity, it can easily plant up to 160 acres (65

ha) of soybeans or 250 (101 ha) acres of corn in one fill. This increases efficiency by approximately 52% in soybeans and 12.8% in corn when compared to a planter with individual hoppers. Like all Yield-Pro® Planters, the YP-2425A uses air to gently move seed from the bulk hopper to the individual Air-Pro® meters mounted on field-proven 25 Series openers.

The YP-2425A row units can be equipped with a wide range of attachments, including coulters and row cleaners. Any way it's equipped, the YP-2425A Yield-Pro® is designed to increase productivity and improve yields.



FEATURES & BENEFITS

- **Central Fill** - These units are fitted with two 82-bu. (2,890L) hoppers for maximum field efficiency, high productivity, and operator safety.
- **25 Series Row Unit** - The 25 Series row unit utilizes ductile cast parallel arms for long-term row unit stability. 15" (38cm), 4mm blades turning on 205 triple-lip seal bearings ensure long life and accurate seed depth. Blades are offset ½" (13mm) to slice residue and form a perfect seed trench.
- **Air-Pro® Meter** - This simple, positive air pressure meter offers the highest level of singulation on the market today, and achieves uniform spacing by “dead-dropping” seed into the patented Clear-Shot® seed tube. Exhaust is discharged close to and directly towards the ground, not up into the atmosphere, earning the Bee-Friendly™ title. Gentle on seeds, it is more efficient than a vacuum meter and requires less maintenance.
- **Multiple Row Spacings Available** - Multiple row spacings are available to match a variety of needs, including 15", 20", 30" and 70cm (38, 51, 76cm) single-row and 30" (76cm) twin-row on all models.
- **3-Section Flexibility with Floating Hitch** - A floating hitch and 3-section flexibility ensure seed placement accuracy, even in the toughest terrain.



BULK SEED HOPPERS



TELESCOPING TONGUE



STANDARD EQUIPMENT

- Air-Pro® metering system
- 25 Series openers
- Narrow transport width
- Telescoping tongue
- 4mm blades
- LED safety lighting

OPTIONAL EQUIPMENT

- Swath Command™
- Row-Pro™
- AccuShot™
- Row cleaners
- Gauge wheel scrapers
- Rear hitch and fertilizer delivery system
- Low-profile flat-fold markers

60' (18.3m) Bulk Fill	YP-2425A
Row Spacing	15", 20", 30", 70cm, TR30° (38, 51, 76, TR76cm)
H.P. Requirements	220 - 440
Planting Width	60' (18.3m)
Transport Width	15' 3" (4.7m)
Transport Height	13' 2" (4m)
Weight lbs*	18,420 - 31,200 (8,355 - 14,152kg)
Seed Capacity	2 - 82 bu. (2,890L) hoppers

Specifications are subject to change without prior notification.
Images may or may not depict current production models.

*Approximate maximum base weight

Our Mission

To be a company where innovation, teamwork and a desire to improve combine to:

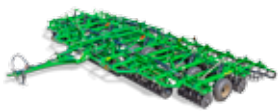
1. Delight our customers
2. Provide a rewarding workplace for our employees
3. Generate profits for stability and growth



Great Plains

Great Plains Manufacturing, Inc., was established on April 1, 1976 by company founder Roy Applequist. Since our inception, Great Plains has become a leader in the manufacturing of agricultural implements for tillage, seeding, and planting in the United States, as well as a leading producer of dirtworking, turf maintenance, and landscaping equipment. Now a Kubota Company, Great Plains Manufacturing is comprised of Great Plains Ag, Great Plains International, Land Pride, Great Plains Acceptance Corporation (GPAC), and Great Plains Trucking.

Great Plains Ag Products



VERTICAL TILLAGE



CONVENTIONAL TILLAGE



HD DRILLS



MIN-TILL DRILLS



NO-TILL DRILLS



AIR DRILLS



COMPACT DRILLS



YIELD-PRO® PLANTERS



FERTILIZER APPLICATORS



SPRAYERS



ROTARY CUTTERS



PLANTING COMPONENTS

COMPANY INFO



SALINA CAMPUS | SALINA, KS



Great Plains
"Harvest Starts Here."
PRODUCT DEVELOPMENT
ASSARIA, KS



Great Plains
"Harvest Starts Here."
TIPTON PLANT
TIPTON, KS



Great Plains
"Harvest Starts Here."
ELLSWORTH PLANT
ELLSWORTH, KS



Great Plains
Trucking
TRUCKING DIVISION
SALINA, KS



Land Pride
PRODUCT DEVELOPMENT
SALINA, KS



Land Pride
LUCAS PLANT
LUCAS, KS



Land Pride
KIPP PLANT
KIPP, KS



Land Pride
ENTERPRISE PLANT
ENTERPRISE, KS



Land Pride
ABILENE PLANT
ABILENE, KS



Great Plains
CONFERENCE CENTER
"Setting the pace through innovation."



CORPORATE OFFICE

What can you do at www.GreatPlainsInt.com?

Review agronomy principles
Locate a Great Plains dealer
Download Field Adjustment Guides
Look up parts for your product

Read service tips
Watch product videos
Download Parts/Operator Manuals
View upcoming show schedule

Watch service videos
View company history
Read customer reviews
View corporate information

Find us on:    



Australian Distributors:



Kubota®

KUBOTA TRACTOR AUSTRALIA PTY LTD
25-29 Permas Way, TRUGANINA Vic, 3029

1 800 334 653 | sales@kubota.com.au | www.kubota.com.au

CB NORWOOD DISTRIBUTORS, LTD.

P.O. Box 1265, 888 Tremain Avenue, Palmerston North 0800 KUBOTA
Tel: 06 356 4920 | Fax: 06 356 4939

The Great Plains logo, which features a stylized sun or sunburst above the text "Great Plains".

Great Plains

“Harvest Starts Here.”

+1.785.823.3276 | 1525 E. North St., Salina, KS 67401 USA
www.GreatPlainsInt.com | gpi@greatplainsmfg.com